

Wetlands

Warriors of Climate Change

Mitigation

Reducing emissions and stabilizing the levels of greenhouse gases we allow into the atmosphere

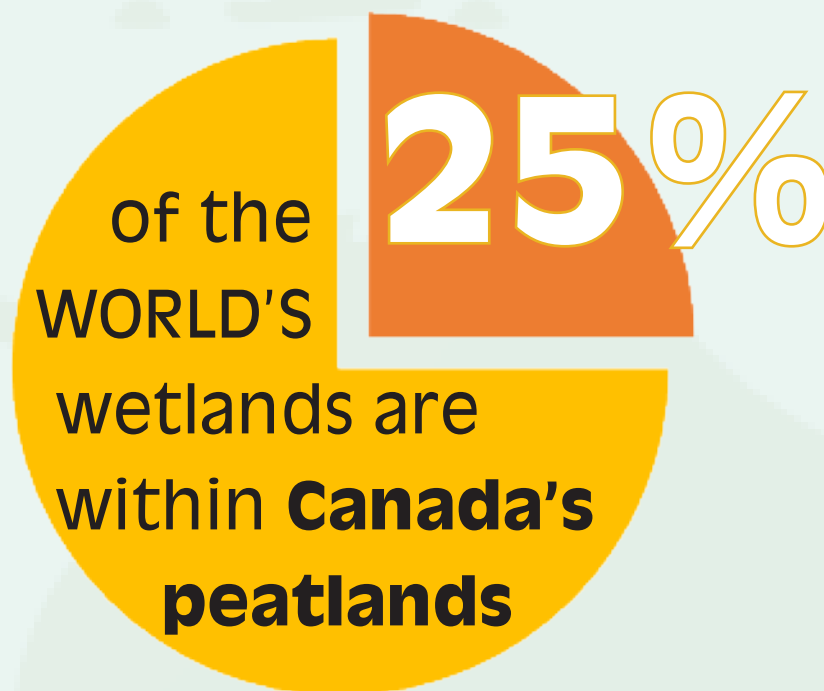
Adaptation

Any modification in a system or process in order to address uncertainties related to climate change



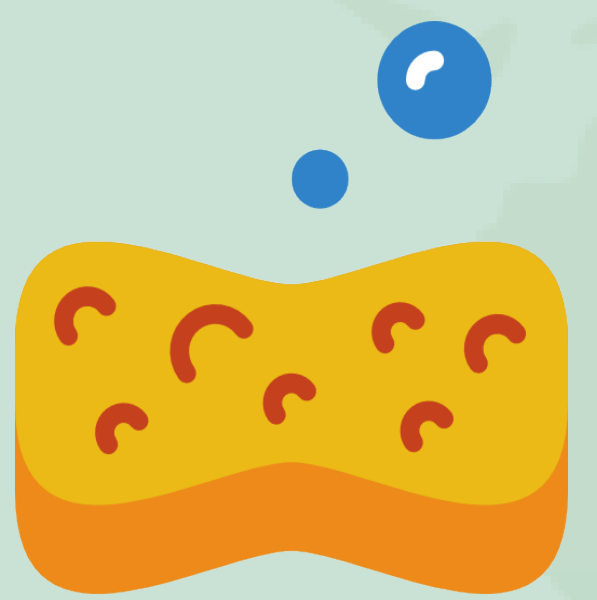
Carbon Sink

Wetlands on the earth can store **2 Trillion Tonnes** of CO₂



Canada's wetlands hold **147 Tonnes** of **CARBON** in the form of un-decayed vegetation, aka **PEAT**

Peatlands can store on average **10X** more CO₂ than other ecosystems



One acre of 30cm deep wetland can hold **1.2 million liters** of water



Giant Sponges

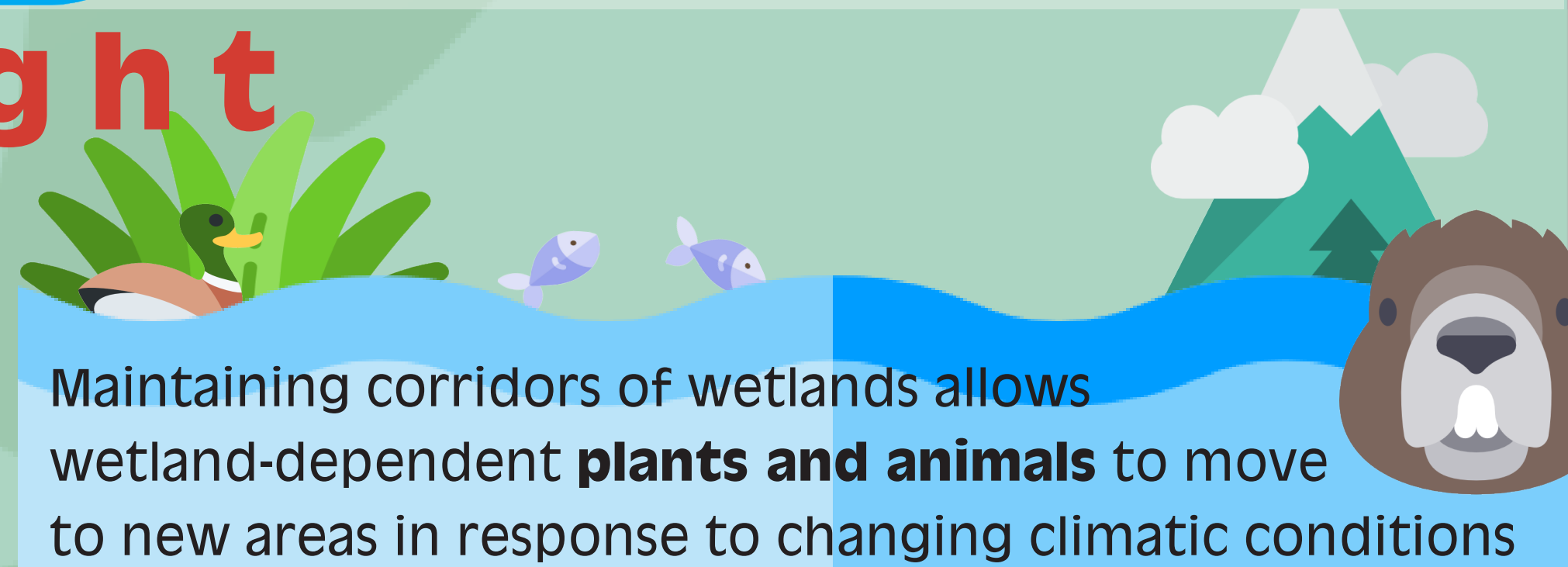
Wetlands absorb **WATER** during extreme weather events such as **Floods**, **Hurricanes**, & **Tidal Waves**



Prevents Drought

After absorbing flood waters, wetlands **SLOWLY RELEASE** water back into the environment

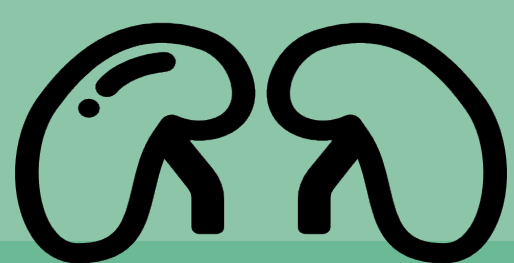
This slow release makes water available for drinking, food production, and sanitation during droughts



Maintaining corridors of wetlands allows wetland-dependent **plants and animals** to move to new areas in response to changing climatic conditions



Considered **NATURE'S KIDNEYS**, wetlands purify water by trapping sediments, excess nutrients, and pollutants



Wetlands naturally filter water through thick layers of moss

Cleans Water

One city saved **\$2.8 Billion** by purchasing the land around reservoirs that **purify the water supply for FREE**

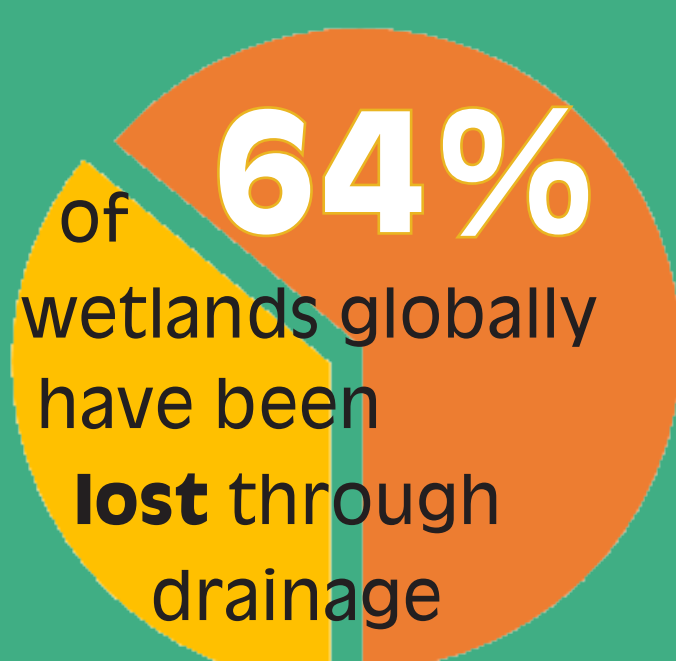
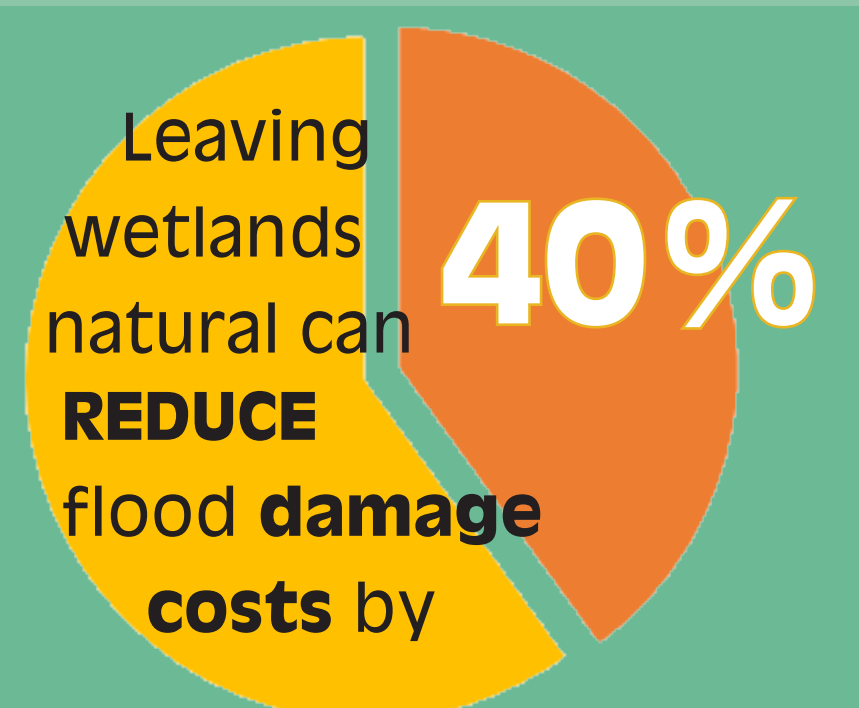
Demand for clean water is growing at **2X** the rate of population increase



Free Services

The Millennium Ecosystem Assessment gave wetlands and their services a value of **\$18 Trillion**

In the Caribbean, the shoreline protection services provided by wetlands are valued at **\$2.7 Billion**



Conserve & Restore

If damaged, wetlands **release greenhouse gases** into the atmosphere

By **Conserving and Restoring** wetlands, we can reduce carbon emissions and increase our ability to **ADAPT** to climate change

WETLANDS ARE NOT WASTELANDS